

TIMED ONLINE FARM RETIREMENT AUCTION



OPENS: TUESDAY, JUNE 9

CLOSES: THURSDAY, JUNE 18 | 7PM 2020

14730 139TH AVE., PARK RAPIDS, MN 56470

LOCATION: From Park Rapids, MN, 2 miles south on US Hwy 71, 3/4 mile west on 150th St., 1/2 mile south on 139th Ave.

AUCTIONEER'S NOTE: After a lifetime of farming Tod & Renee have decided to retire. Most equipment purchased new and shedded. Equipment has had excellent maintenance. Equipment is ready for viewing.

PREVIEW: Friday, June 12 from 9AM - 2PM or by appointment / **LOADOUT:** Friday, June 19 from 9AM - 4PM or by appointment

TRACTORS

2013 Caterpillar MT765D, powershift, 5 hyd., 3 pt., quick hitch, 1000 PTO, Trimble CFX 750 auto steer & globe, Nav II controller, climate control, steering wheel controls, CD player, power mirrors, HID lights, (20) front weights, Clearview covers, narrow undercarriage wheels, 24" belts, 4,019 hrs.

2011 Caterpillar MT875C, powershift, buddy seat, leather interior, 5 hyd., Trimble 750 auto steer & globe, Nav II controller, climate control, steering wheel controls, wide swing drawbar, CD/XM radio, power mirrors, HID lights, beacon lights, front idler weights, (32) front weights, Clearview covers, 36" belts, 4,312 hrs., single season on New Camso Ag 4500 belts

2001 John Deere 7810, MFWD, CAH, Field Office, powershift, 4 hyd., 3 pt., quick hitch, 540/1000 PTO, diff lock, extra lights & mirrors, loader joystick, K&M step kit, Firestone 290/95R34 front tires, Firestone 14.9R46 rear tires w/10-bolt duals, 7,581 hrs.

1995 John Deere 8100, MFWD, CAH, powershift, 4 hyd., 3 pt., quick hitch, 1000 PTO, AutoTrac ready, diff lock, HID lights, front weights, Firestone 380/85R34 front tires, Goodyear 380/90R50 rear tires w/10-bolt duals, 8,966 hrs.

2008 John Deere 8130, MFWD, active seat, buddy seat, ILS, powershift, 4 hyd., 60 gpm hyd. pump, 12,400 lb. 3 pt., quick hitch, 540/1000 PTO-includes 1000 shaft only, cold weather pkg., AutoTrac ready, K&M step kit, dual beam radar, front weights, front fenders, Firestone 380/80R front tires w/duals, Firestone 380/90R54 tires w/10-bolt rear duals, 5,968 hrs.

2013 John Deere 8335R, MFWD, CAH, Premium CommandView cab, buddy seat, IVT, ILS, leather, 5 hyd., 60 gpm hyd. pump, 18,300 lb. 3 pt., quick hitch, 540/1000 PTO, cold weather pkg., AutoTrac ready, 7" display, Cat 4 drawbar, CD/Bluetooth, power mirrors, dual beam radar, beacon light kit, HID lights, front fenders, front weights, (6) wheel weights, Firestone 380/80R38 front tires w/duals, Firestone 380/90R54 rear tires w/duals, 2,941.3 hrs.

John Deere 3010D, wide front, syncro, 1 hyd., 3 pt., 540 PTO, flattop fenders, Firestone 18.4-30 tires, 3,623 hrs., new battery, starter, battery disconnect & seat

1973 John Deere 4230, 2WD, CAH, quad range, diesel, 2 hyd., 3 pt., 540/1000 PTO, diff lock, no radio, Armstrong 18.4-34 tires, 5,932 hrs.

PLANTING EQUIPMENT

John Deere 455, drill, 30', 6" spacing, front fold, 2" closing wheels variable rate, hyd. drive fans, steerable axles, Titan 380/80R46 tires

2012 John Deere 1770NT, planter, CCS, 16x30", 2 pt., VacuMeter, RowCommand, pneumatic down pressure, 20/20SeedSense, dry & liquid fertilizer, fungicide Dosatron applicator, double disc fertilizer openers, on board air compressor, tow behind hitch, markers

TILLAGE EQUIPMENT

Case-IH 730B, disc ripper, 7x30", 7" points, lead shanks, rock flex disc gangs, rock box, rear disc leveler

2015 John Deere 2730, disc ripper, 20", 11 shank, 24" spacing, 7-1/2" John Deere points, hyd. wing fold, shank guards, rock flex gangs, rear disc leveler, rear crumbler, single pt. depth control, 445/50R22.5 tires on main frame, 1 season on new front discs

John Deere 3600, auto reset plow, 6x18", on land hitch, no coulters

Summers, coil packer, 50', double wing fold, hyd. fold, rock flex, 11L-15 tires

2015 John Deere 2623, rock flex disc, 49'3", double wing fold, hyd. leveler, single pt. depth, (2) gauge wheels, 340/65R18 tires on main frame

John Deere 637, rock flex disc, 29'3", 22" average blade size, hyd. leveler, spray bar attachment, single pt. depth, 12.5L-15 tires

Wil-Rich 3400, field cultivator, 30', 7" knock-on sweeps, wing fold, edge-on shanks, tandems across, 4-bar harrow

Wil-Rich Quad X, field cultivator, 50', 7" knock-on sweeps, double wing fold, edge-on shanks, full floating hitch, rock box, double spring standards in wheel tracks, rear hitch, rear hyd., 5-bar spike tooth harrow, (4) gauge wheels

Alloway 2040, cultivator, 16x30", 3 pt., flat fold, danish tine, (4) gauge wheels

Alloway 2070, row crop cultivator, 16x30", flat fold, danish tine, (4) gauge wheels

TILLAGE EQUIPMENT

M&W 1925, rotary hoe, 20', flat fold, 3 pt.

Yetter 3541, rotary hoe, 35', flat fold, 3 pt.

DAY CAB SEMIS

2007 Freightliner Columbia, day cab, 60 Series 14L Detroit, 10 spd., jake brake, air ride, cruise, diff lock, dual tanks, 180" WB, full fenders, 275/80R22.5 tires on all aluminum wheels, 520,850 miles

2009 Kenworth T800, factory day cab, C-9 Cat, 10 spd., jake brake, air ride, cruise, diff lock, 168" WB, full fenders, 275/80R22.5 tires on all aluminum wheels, shows 76,765 miles, oil analysis records from 2020

1999 Kenworth T800, factory day cab, N14 Cummins, 10 spd., jake brake, air ride, air slide 5th wheel, cruise, diff lock, dual fuel tanks, full fenders, 275/80R22.5 tires on all aluminum, shows 350,015 miles

OTHER TRUCKS

1984 White Volvo WCS64T, tandem axle grain truck, 6V92 Detroit, 9 spd., diff lock, 21" steel box & hoist, roll tarp, 3-piece end gate, 3.70 axle ratio, 11R22.5 tires on front steel wheels & rear Dayton wheels, shows 529,915 miles

1984 Mack MR686S, cab over, 350 Mack, Mack 6 spd., Hendrickson suspension, diff lock, 3,800 gal. stainless steel tank, newer Honda GX160 engine, 2" hose reel, garden hose reel, (2)12v chemical pump, induction cone, toolbox, full fenders, 425/65R22.5 front tires on Dayton wheels, 11R22.5 rear tires on Dayton wheels, shows 44,903 miles

1990 Chevrolet 1500, ext. cab, short box, V-8, automatic, 4x4, dual exhaust, nerf bars, bedliner, tool box, 315/75R16 tires w/alloy wheels, 154,878 miles, includes manuals

OTHER TRUCKS

1993 Ford F150 XLT, reg. cab., long box, gas, automatic, 4x4, steel wheels, miles unknown

1994 Ford F350 XLT, reg. cab, dually, diesel, 5 spd., manual, 4x4, custom built service body, power windows/locks, headache rack, dual exhaust, grill guard, running boards, 5th wheel ball, 235/65R16 tires on steel wheels

GRAIN CARTS & GRAVITY BOXES

Killbros 350, gravity box, wood ext., on Killbros 1072 running gear, 11L-15SL tires

Killbros 350, gravity box, wood ext., on Killbros 1072 running gear, 11L-15SL tires

Kinze 1050 Sof-Trak Harvest Commander - grain cart, 1000 PTO, hyd. spout, roll tarp, scale, steel idlers, 36" tracks

HOPPER BOTTOM TRAILERS

2015 Timpfe, hopper bottom trailer, 38'x66'x96", ag hopper, air ride, power tarp, single spd. traps, stainless steel corners, 11R22.5 tires on all aluminum wheels

2012 Timpfe, hopper bottom trailer, 38'x66'x96", ag hopper, air ride, power tarp, single spd. traps, stainless steel corners, 11R22.5 tires on all aluminum wheels

2003 Timpfe, hopper bottom trailer, 38'x66'x96", ag hopper, air ride, power tarp, single spd. traps, stainless steel corners, 11R22.5 tires on all aluminum wheels

LIVESTOCK TRAILER

1996 Exiss ExxPress, tri-axle 5th wheel livestock trailer, 30', 8' inside, spring ride, all aluminum, (2) center gates, 235/85R16 tires w/8-bolt wheels

HEADER TRAILERS

2012 Amerifab, header trailer, 6-wheel, lights, brakes, torsion bar axle, 235/80R16 tires

Horst, header trailer, 40', 4-wheel steer, 280/70R15 tires

UTILITY TRAILER

2012 Thunder Creek, tandem axle bumper hitch fuel trailer, DEF/ fuel, 1,000 gal. tank, gas pump, auto shut-off, (2) hose reels, 235/80R16 tires on aluminum wheels

BEAN EQUIPMENT

2017 Picket Twin Master F, pull-type edible bean combine, 1000 PTO, (3) camera system w/display, shaft monitor, Titan 30.5L-32 diamond tread tires

Bob Bean King 666, edible bean combine, 1000 PTO, Firestone 23.1-26 tires

Bob Bean King 666, edible bean combine, 1000 PTO, switch box included, Firestone 23.1-26 tires

Bob Bean King 666, edible bean combine, 1000 PTO, switch box included, Firestone 23.1-26 tires

Bob Bean King 666, edible bean combine, 1000 PTO, Firestone 23.1-26 tires



COMBINES & HEADS

2012 Case-IH 9230T, PRWD, luxury cab, leather interior, lateral tilt, Precision Yield Sense, AFS, Pro 700 monitor, auto steer, hyd. fold topper, bubble up auger, long auger, power mirrors, HID lights, rear hitch, rear wheel weights, self-leveling sieves, Clearview covers, 36" tracks, Firestone 28L-26 rear tires, 2,412 sep. hrs., 3,142 engine hrs.

2011 Case-IH 2162, flex draper, 40', 3" cut, hyd. fore/aft, flex shafts, crop lifters, flip over rear, single pt. hookup, Case-IH adaptor

2012 John Deere 616C, corn head, RowSense, Headsight Insight, (3) sensor head height, hyd. deck plates, hyd. lift Lankota stalk stompers, knife rolls, stubble light kit, single pt. hookup, Case-IH 9230 mounts



SteffesGroup.com

TOD & RENEE BECKER | TOD 218.255.0582
or Eric Gabrielson at Steffes Group, 320.693.9371
or 701.238.2570



Steffes Group, Inc., 24400 MN Hwy 22 S, Litchfield, MN 55355 | 320.693.9371

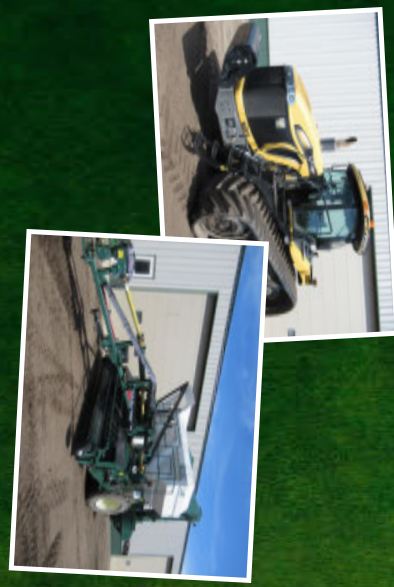
TERMS: All items sold as is where is. Payment of cash or check must be made sale day before removal of items. Statements made auction day take precedence over all advertising. \$35 documentation fee applies to all titled vehicles. Titles will be mailed. Canadian buyers need a bank letter of credit to facilitate border transfer.



CLOSES: THURSDAY, JUNE 18 | 7PM
2020

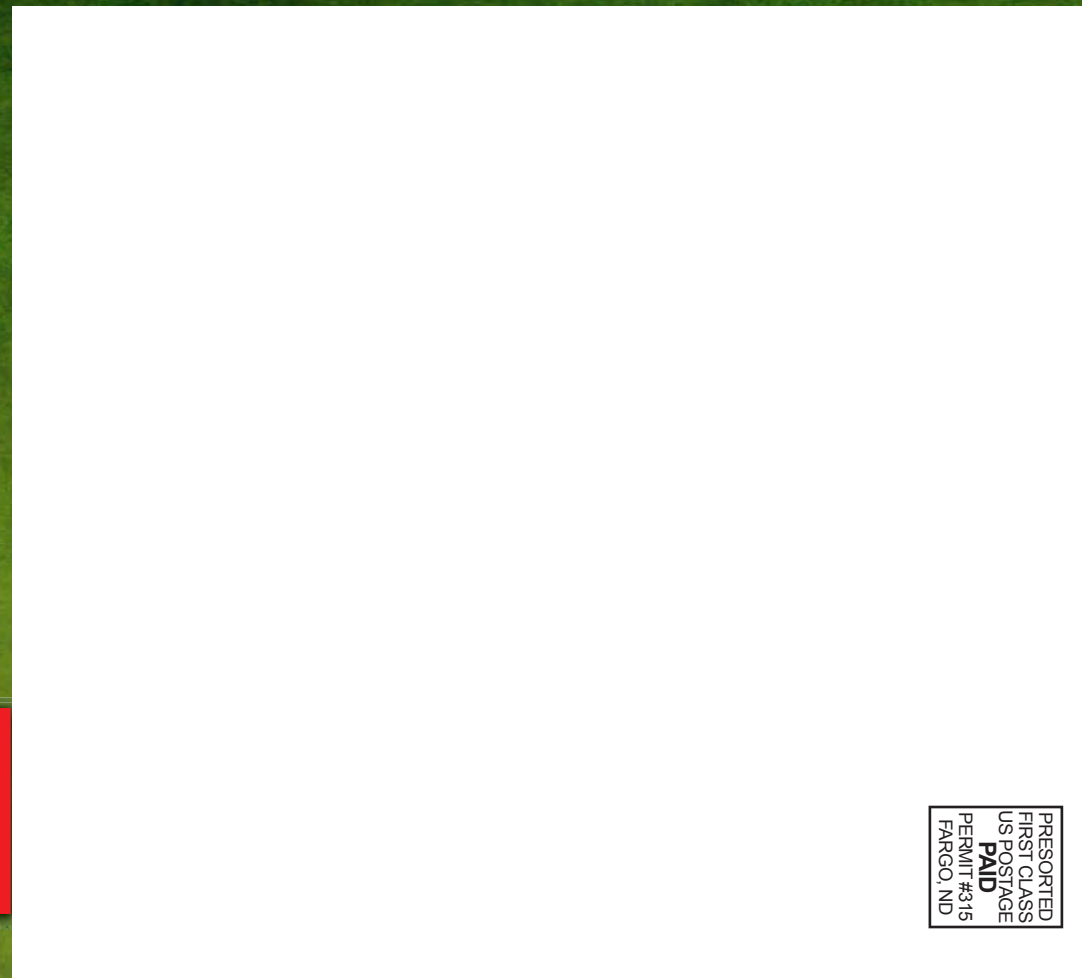
14730 139th Ave., Park Rapids, MN 56470

TIMED ONLINE FARM RETIREMENT AUCTION

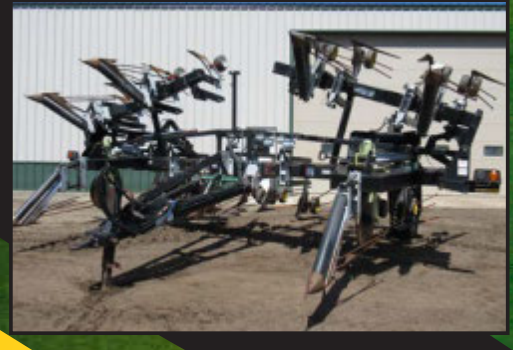


FARM RETIREMENT AUCTION

Steffes Group, Inc.
24400 MN Hwy 22 S
Litchfield, MN 55355



RESERVED
FIRST CLASS
US POSTAGE
PAID
PERMIT #315
FARGO, ND



BEAN EQUIPMENT

Elmers BCDBFSP 1630, edible bean cutter, Orthman guidance system, pull-type or 3 pt. mount
Picket , crop divider, universal mounts
2002 Picket 1268-B-E, windrower, 20', center delivery
2010 Picket C8030-2B, one step bean lifter, 20', 8x30', center delivery
2009 Picket C8030-2B, one step bean lifter, 20', 8x30', center delivery

SELF-PROPELLED SPRAYER & SPREADER

2014 Apache AS1020, sprayer, 2WD, CAH, leather interior, 120' boom, boom height control, aluminum boom, 1,000 gal. poly tank, rinse tank, triple nozzle, Raven ENV1210-Pro, integrated auto steer, beacon light kit, HID lights, front & rear fenders, Michelin 380/85R38 front tires, Michelin 380/90R46 rear tires w/duals, 1,456 hrs.
2009 Apache AS1210, dry fertilizer spreader, 2WD, cloth interior, Raven Smart Traxx auto steer, Raven controls, CD player, New Leader 13020G4-9 stainless steel box, tarp, Titan 320/85R38 front tires, Titan 380/90R46 rear tires w/ duals, 2,026 hrs.

CHEMICAL/FERTILIZER ACCESSORIES

Ag System AG111, bumper hitch water/fertilizer tender trailer, spring ride, 1,300 gal. poly tank, w/CSI chemical injectors, Firestone 280/70R15 tires
Ag System AG111, bumper hitch water/fertilizer tender trailer, spring ride, 1,300 gal. poly tank, w/CSI chemical injectors, Firestone 280/70R15 tires

ROUND BALER

2012 John Deere 568, round baler, 1000 PTO, Mega Wide Plus, net wrap, cover edge, windrow deflector, Bale Command monitor, Titan 21.5L-16.1 tires, 7,947 bales, used for straw only

BALE HANDLING ACCESSORY

Frontier BC1110, tandem axle bumper hitch bale carrier, 32'x15.50'x16.5'

ROCK PICKER

2007 Kongskilde 7100, rockpicker, 15', hyd. wing fold, double reel, high dump, 500-60-22.5 bar lug tires

OTHER EQUIPMENT

Pallet of, misc. pallet racking, numerous lengths & sizes
(2) Fuel oil tanks
Post hole auger, 3 pt., 540 PTO, w/bits (12", 9", & 6"), on pallet

MANURE HANDLING EQUIPMENT

Houle 5250, tandem axle liquid manure tank, 1000 PTO, (5) disc closing applicator, rear steer axle, Firestone 28L-26 diamond tread tires

GPS & NAVIGATION EQUIPMENT

John Deere 2630, display, SF2, RTK, section control
John Deere 2630, display, SF2
John Deere 3000, receiver, RTK, radio 435-470
John Deere 6000, receiver, RTK, radio 450
John Deere 6000, receiver, RTK, radio 450
Navigator Automatic , guidance system, w/controller, 3 pt.

BOAT

1980 Grumman , boat, 15', 35 hp. Johnson engine, trolling motor w/foot control, 3 chairs, Shore Land'r trailer

AUTOMOBILE

2003 Honda Odyssey, van, 3.5 V-6, automatic, leather, captains chairs, CD player, 225/60R16 tires w/alloy wheels, 235,346 miles

FUEL TANK

Fuel barrel, 500 gal., w/pump, on frame

